



Gift Bag, 3 Boxes & Tea Tower

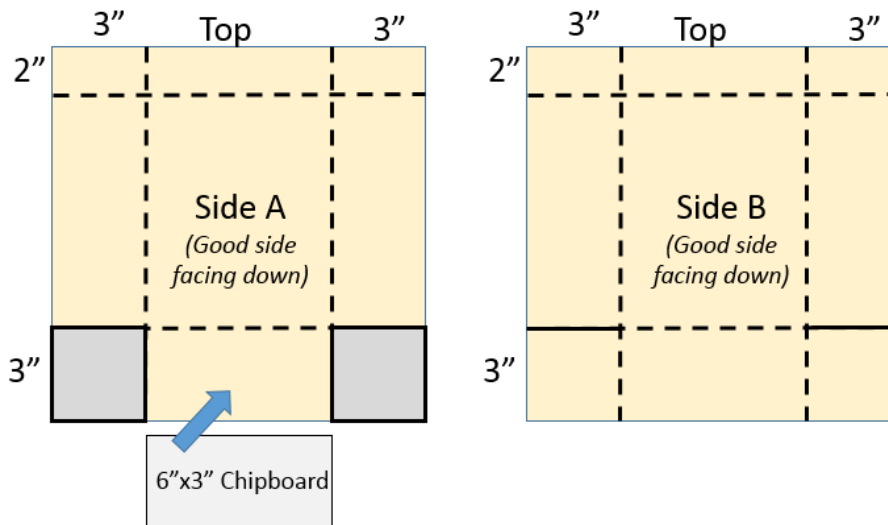
Supplies and Tools You'll Need

- [Colorways](#) 12x12 paper from [Paper House Productions](#)
- [Colorways](#) Rub-Ons and Accent Packs from [Paper House Productions](#)
- Ribbon
- 12" Paper Trimmer & Scissors
- Pop-dots
- Pencil
- Ruler
- [Scor-Pal](#) and scoring tool
- Strong adhesive ¼" tape
- Quick dry liquid adhesive

Instructions – Read These Through Before You Start

Gift Bag

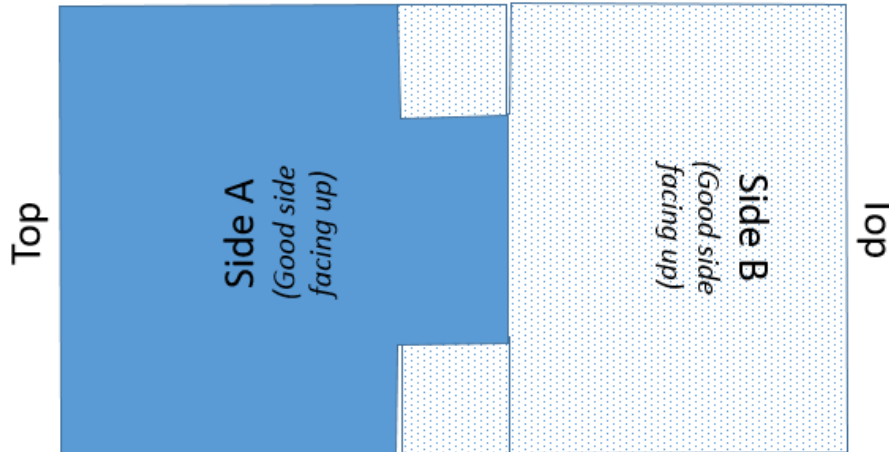
1. Score and cut two 12x12 sheets of [Colorways](#) Peacock cardstock as shown in the diagram below. Dotted lines are score lines. Solid lines are cut lines.



2. Fold the top of each paper down towards the outside of the bag. That gives you a little trim strip at the top of the bag.
3. Fold the sides in and the bottom up on each sheet of paper.
4. Adhere a piece of chipboard that's 3"x6" to the inside (bad side) of Side A.
5. Embellish the bag while it's flat with [Colorways](#) Rub-Ons and Accent Packs (Make Today and Emerald).



- Flip the sides over and glue Side A to Side B (so the chipboard piece is “sandwiched” between Side A cardstock and Side B cardstock as show below.



- Assemble the bag by folding Side A and Side B up and adhering the flaps to the inside of the bag.
- Punch holes at the top of the bag and add ribbon as desired. Line the bag with tissue paper for the perfect gift bag!

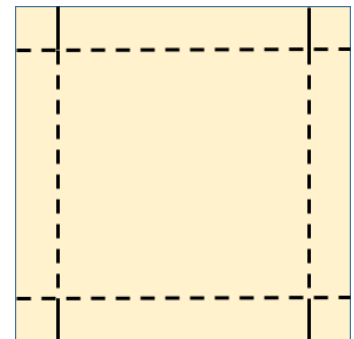
3 Boxes

The boxes come in three sizes; Large, Medium and Tiny. Each instruction lists three measurements in order of Large, Medium and Tiny in parenthesis (L, M, T).

For box lids that fit with ease, the key to success is to score the lid just slightly less than what the measurement says. To do that, just shift the paper over a hair (about 1/16" of an inch) over on the score board. For example, if the instructions says to score 1- ½" in on all sides, it turns out to be about 1-7/16" (and the line on the scoreboard says 1-1/2").

Box Bottom

- Cut the [Colorways](#) Lucky and Emerald Entrance cardstock in to a (12", 10", 6") square.
- Score the cardstock (3", 3", 2") from the edge, on all four sides (dotted lines).
- Cut 4 slits as shown in the diagram (solid lines).
- Fold in and crease on score lines.
- Fold down each corner and add adhesive.
- Form box bottom by adhering corner flaps to inside box sides.
- Ink the edges as necessary.



Box Top

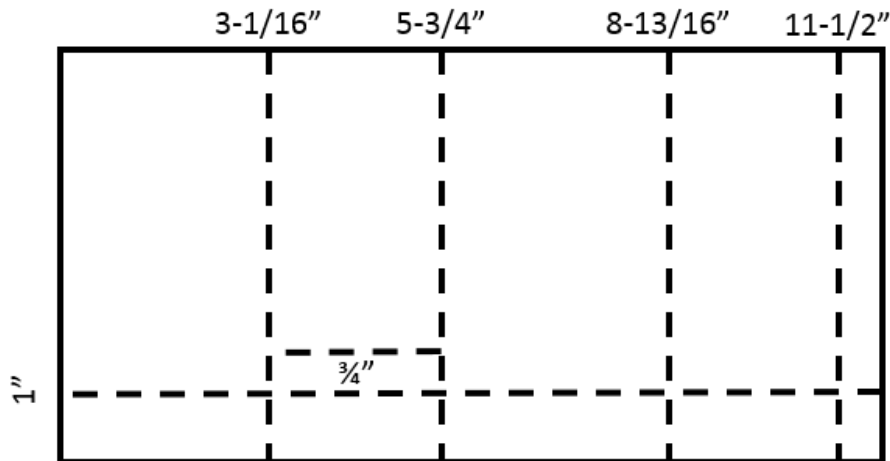
- Cut the [Colorways](#) Lucky and Emerald Entrance cardstock in to a (9", 7", 4") square.



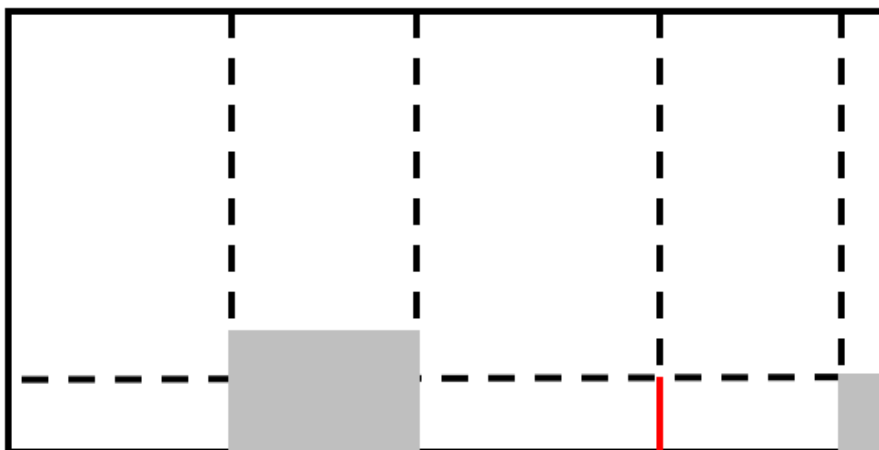
2. Score the (9", 7", 4") square of designer cardstock just shy of (1½", 1½", 1") (i.e., 1-7/16", 1-7/16", 15/16") from the edge, on all four sides (dotted lines).
3. Cut 4 slits as shown in the diagram (solid lines).
4. Fold in and crease on score lines.
5. Fold down each corner and add adhesive.
6. Form box top by adhering corner flaps to inside box sides.
7. Ink the edges as necessary.

Tea Tower

1. Start with a 6"x12" piece of [Colorways](#) Leatherbound cardstock and score as shown below.

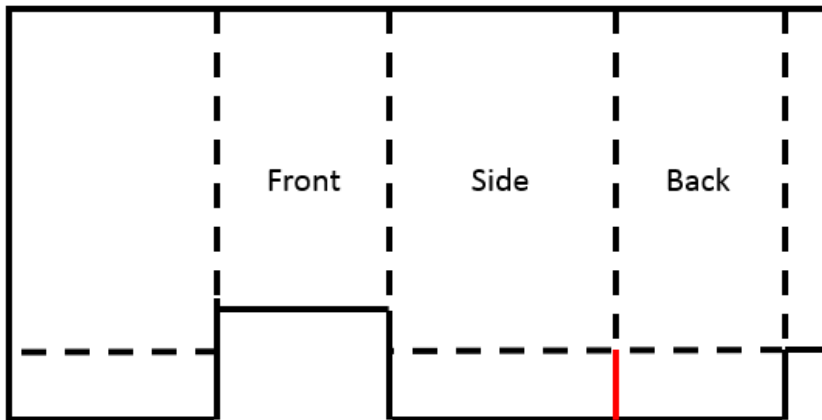


2. Cut along the solid lines shown below. You should end up removing two rectangles and cutting 1 slit (red line).

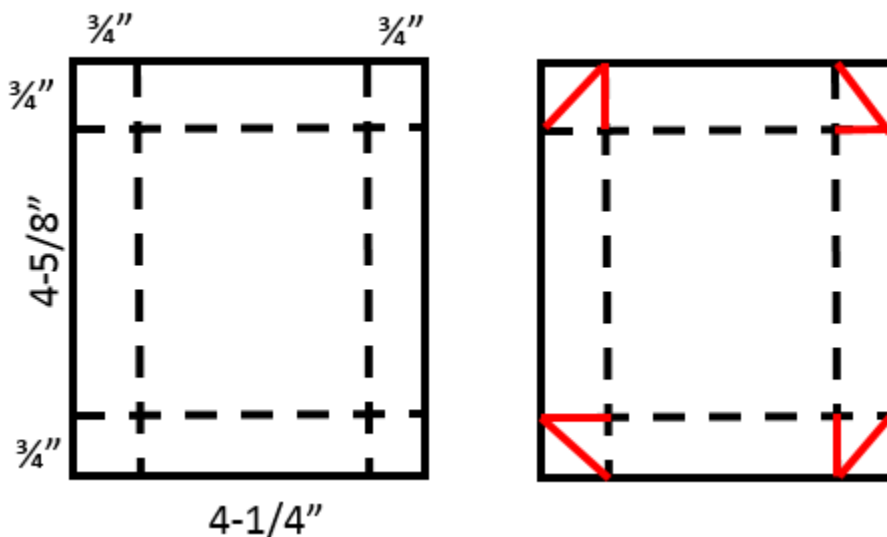




- It's easier to embellish the tower while it's lying flat. You can embellish 3 out of four sides while the piece is flat on your work-surface. Cut the embellishment papers for the fourth "other" side, and layer them on to the mat, but do not adhere the mat until the tower is assembled.



- Cover a 3"x3-3/8" piece of chipboard with [Colorways](#) cardstock to be the base of the tower.
- Assemble the tower by adhering the flap on the right to the "other side." I like to adhere it in the front of the tower to give a closed corner – most of the seam will be covered by the mat and the top.
- Adhere the tower to the base.
- Form the lid from a piece of [Colorways](#) cardstock measuring 4-1/4"x4-5/8". Score 3/4" all the way around. Cut a slit at each corner and taper the corners as shown.



Embellish the lid top while it is lying flat on your work-surface. Then fold the sides of the lid down and adhere each corner to form the top of the tea tower.



- Wrap a band of patterned cardstock around the rim of the top to help hold it together and add a decorative element. The band should be $\frac{1}{2}$ " x 12" (to give you a small overlap at the seam).

Tea Tower Mat & Embellishment Sizes

Use the following as a guide when cutting embellishments for the tea tower.

Base Mats	Upper Half Embellishment	Lower Half Embellishment	Lid
Sides (2): 2-3/4" x 4-3/4" Front: 2-3/8" x 4" Back: 2-3/8" x 4-3/4" Tower Top: 2-7/8" x 2-1/2"	Sides (2): 2-1/2" x 2-1/8" Front/Back: 2-1/8" x 2-1/8"	Sides (2): 2-1/2" x 2-1/4" Front: 1-1/2" x 2-1/8" Back: 2-1/8" x 2-1/8"	Embellishment: 2-1/2" x 2-1/8"

